



**ORMEAU**  
STATE SCHOOL

**HELPING EACH OTHER TO DO OUR BEST**

Mirambeena Drive  
Pimpama QLD 4209  
Subscribe: <http://ormeauss.schoolzineplus.com/subscribe>

Email: [admin@ormeauss.eq.edu.au](mailto:admin@ormeauss.eq.edu.au)  
Phone: 07 5546 6500  
Fax: 07 5546 7247



21 April 2016

## FROM THE PRINCIPAL

### Which birth order position is best?

**Almost without exception children say that their position in their family, whatever one that may be, is the worst.**

First born's moan about their strict parents or the hard run that they have compared to their siblings. Seconds and middles complain about the unfairness and the disadvantages of following in another's footsteps. Youngest point to the fact that no one takes them seriously or that no one ever listens to them.

Every position has its advantages and disadvantages so it's best to just get on with it, regardless of where you come.

Too many factors impact on a child to suggest that the position in his family will mean his fate is signed, sealed and delivered. Temperament, the family frame, parenting styles and siblings all combine to influence a child in the formative years. We are not at the whim of our biology nor can we blame our mothers or our siblings for our fate.

The important elements to remember about birth order are these:

- It is not so much a person's position in his family that is significant; it is how he or she functions. When a person doesn't conform with a prescribed birth order personality it is useful to look at the variables that may have caused this divergence. It usually makes sense about a person's family background.
- We usually take our personality cues from the sibling above us so if you are trying to work out how you or your child fit in look at the next oldest sibling to gain an understanding.

- No position is better than another however each has its disadvantages and inherent strengths. Your reaction to your child's strengths and weaknesses will be influenced by your own birth order position. Youngest born parents find it easier to accept the negative traits of their children than eldest who often want to compensate for or fix shortcomings.
- The way parents treat children is just as significant as their birth order, gender, spacing and temperament. It is parents who shape the social and physical environment in which children live.
- A child's birth order personality is developed in the first five or six years of life so it is the early years that are critical in a child's development.
- Birth order is merely a determinant of a child's future not a life sentence. No system of personality is set in stone or comprehensive enough to provide a formula for development.

It is fascinating to look at the similarities and differences between children in families according to the perspective of birth order. It needs to be factored in when determining a whole range of issues involving children and young people.

Kind regards,

**Heather Andrew**

## FROM THE DEPUTIES' DESK

### Term 2

Welcome back to all of our families here at Ormeau State School. Special mention to our new families who have just started. We look forward to working with you over the course of your child's schooling.

**Great state. Great opportunity.**



## NAPLAN

Naplan testing will take place this term. The date of the testing is from the 10th May – 12th May. For more information on this national event please check out the department's website:

<http://education.qld.gov.au/naplan/>

## Qparents

Qparents is an Education Queensland initiative. It will give you access to your child's student information online so you can stay connected to your school anywhere, anytime. You can access:

- Report cards and assessment
- Attendance records
- Invoice and payment details
- Online payments and much more!

Visit the link below for more information.

<https://qparents.qld.edu.au/%23/login>

If you need the school to resend you an invitation, please contact our wonderful office staff.

## Gala Days

Gala days are continuing this term. The dates for our gala days are 15th April, 22nd April and the 29th April.

There are a few changes this year, particularly around payments.

Payments for Gala days will now ONLY be taken via internet banking or at the cash window.

Account name: Ormeau SS General Account  
BSB: 064-401  
Account No: 00090359  
Reference: Student EQ ID Number/Gala (EG, 465981257W/Gala)

Good luck to all of our sporting teams, they have done, and will continue to do us proud.

## Life Education

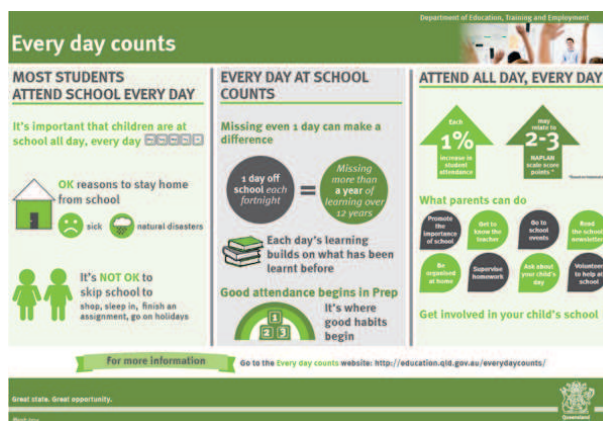
Life Education lessons have started for our students and they are extremely excited to once again be seeing "Healthy Harold". Once again, a huge thank you to our P&C who has allowed all of our students to attend free of charge.

## Cross Country

Good luck to our cross country team who will compete at the Beenleigh Zone Cross Country Carnival on Thursday 21 April. We wish them well.

## Attendance

Student attendance continues to be a push at Ormeau State School. It is extremely important that your child attends school as often as possible to give them the very best chance of success at school. The below infographic highlights the importance of attendance:



**Your Deputies,  
Brendan Creighton & Jane Tuckett.**

## PREP 1, PREP 2, PREP 3, PREP 4 AND PREP 5

Dear Prep Families,

Welcome back to Term Two. We have a very busy term ahead of us with lots happening. Over the next few weeks, we will be visiting Healthy Harold in the Life Education Van. On the 26th of April, parents will have the opportunity to attend a presentation by literacy coach, Angela Ehmer. This will be a great opportunity for parents to gather information and ideas to help your child at home with their reading skills. We would highly recommend parents to take advantage of this presentation. Child minding will be offered for pre-school aged children. As you would have heard by now, students are able to wear their house shirts each Friday from here on. This should be the house shirt, not just a coloured shirt. With the colder weather beginning to approach, students will be starting to wear jumpers to school. Please be aware that the school does have a specific jumper as a part of the Ormeau State School uniform. Please ensure that only school jumpers are worn at school. We also ask that students still bring water bottles to school every day, even though it is cooling down.

Regards,

**Prep Teachers**

**Rhiannon Saunders, Jonathon Frazer, Fiona Galletly,  
Vanessa Laing, Kate Mirandilla and Kristy Scott**

## 2B, 2F, 2L, 2M AND 2P

Dear Parents and Caregivers,

Term 2 has seen the children enthusiastically head back into their learning. We love seeing them trying to always DO THEIR BEST. We need them to honour the ORMEAU values of RESPONSIBILITY and MANNERS at all times in the classroom and the playground.

We have had some amazing story writing and retells produced already this week. This term the students will continue learning about different character traits as well as designing their own character masks. We will be looking further at money, mapping, scales, area, 3D shapes as well as time and word problems involving addition and subtraction strategies. In Science

specialist classes we have started learning about push and pull forces which we are finding fascinating. In History we are discovering how the Ormeau area has changed over time and learning about the past and present. It is interesting to note that the Year 2's talk about "The Olden Days" as being before mobile phones.

Healthy Harold is visiting and Year 2 have the opportunity to revisit their "Keeping Healthy" unit, as well as starting to consider how to keep themselves safe. Parents/ Caregivers, we have noticed many children do not know their home address or features nearby to their house. Also the phone number to ring in an emergency is 000 in Australia, many children are confused by American T.V. shows which have a different emergency number to call.

The students have a similar homework grid this term with relevant activities for them to complete. There are different degrees of difficulty that they can choose to do. For example; copy out the chorus of their favourite song, write out the whole song, or even design their own song or rap.

**NEW** For some students there will be individual home readers going home which need to be returned the very next day. These children will receive a note shortly. Please remind your children to read every day even if it is in the car or at appointments.

Reminders: The official school house t-shirts may be worn on **Fridays**. These **MUST** be the OFFICIAL school t-shirt which has the house name on the back.

ACACIA - YELLOW  
GREVILLIA - RED  
BANKSIA - GREEN  
JACARANDA - PURPLE

Kind regards from the Year 2 Teachers,

**Deanna Forrester, Jamie Miller, Christine Burch, Jan Laws, Jaci Phillips**

## 4C, 4G, 4H, 4P AND 4T

Year Four has settled into Term Two well. This term we are learning about poetry in English and will be reading, writing and evaluating poems. This will entail a speaking task which students will need to practise at home. They will be reciting a poem of their choice in front of the class. Please assist them in learning the words to the poem and being able to speak clearly and with expression. In Mathematics, we will be learning about 5-digit numbers, length, area and money. Furthermore, we will continue researching the life of convicts from the First Fleet and early settlement in Australia. In Geography, students will continue to explore maps.

Students have visited the Life Education van and learnt about Cybersafety. All the students were engaged and really enjoyed this extra learning experience. We will continue to learn about Cybersafety throughout the term. We would appreciate you reinforcing this learning at home by having discussions with your children about how to stay safe when using the internet and establishing some ground rules for internet usage at home.

Term Two sees the beginning of an exciting change for the students. They can now wear their house shirt every Friday.

These are available from the uniform shop. If they are unsure of their house, their teacher will be able to remind them. Just a reminder, banking is every Monday. If your child would like to participate in school banking, notes are available from the office. Lastly, please ensure your child has all of the resources they require for the term. Some had difficulty finding particular stationery items or books at the beginning of the year so please make sure all items have now been provided.

Regards,

**Natalie Casala, Michael Howlett, Michele Pikunic, Cynthia Thorpe and Shandell Gammon.**

## 6C, 6S, 6T AND 6W

Welcome back to school for Term 2. It is wonderful to see our students rested and recuperated after the holidays. We hope that you enjoyed your family time over the Easter period.

### Curriculum News

The start of the new term sees us as busy as ever. In English, the classes have recently finished creating holiday brochures and/or movie trailers which endeavour to persuade readers to visit a particular holiday destination. It has been wonderful to see the creativeness and persuasiveness of their finished products. This term the children will focus on the narrative genre and will be required to produce an anecdote. Once these short stories are published, we will create a booklet for the children to read throughout stamina time and also enter them into a literacy competition for Year 6 students. Watch this space as winning entries have the opportunity to secure monetary prizes plus attend an award presentation ceremony in October. Exciting writing times are ahead!

### Life Education

Over the next 2 weeks our students will once again enjoy the learning opportunities provided by the Life Education team. Life education is an opportunity for children to learn how to make smart life choices for a healthy future. Our school P and C sees the benefit of every child having the chance to attend this course and consequently fully funds the costs of the program. We thank the P and C for allowing our students the chance to be empowered and inspired by this program. Year 6 will participate in the module "Think Twice". They will identify social, personal situations and consequences that may place young people at risk from alcohol. This includes physical development, social interaction, as well as pressures and influences. Students will discuss, compare and develop strategies to avoid the harmful consequences of alcohol misuse.

### Leadership

Our elected leaders have stepped into their roles with great confidence and maturity and are enjoying the prospects that the position brings them. Our peer mediators have commenced their mediating roles this week and are proving to be a valued addition to the playground. The peer mediators will officially receive their badge of office at our next full school parade in Week 4, which parents are invited to attend.

## House Shirts

It was wonderful to see our students embrace the chance to wear their house colour shirts last Friday. Each Friday children are asked to come to school wearing the official Ormeau House shirt in order to bring a greater sense of belonging to our House system. This year we will see a variety of activities provided to allow the children a chance to collaborate and celebrate their individual House. Please note, that only the official House shirt is to be worn – if this is not possible, the normal day shirt must be worn.

## German Excursion

On Tuesday June 14, Year 6 will be visiting Lone Pine Sanctuary as part of their learning of the German language. The children will have the chance to practically engage in the use of the German language, learning various names of animals, reading maps in German, as well as listening to presentations in German. This will be a wonderful opportunity for the Year 6 students. Look out for more information coming shortly from Frau Hay!

## Interviews

Please remember we have an open door policy and are interested in you and your child. However, if you require a lengthy period of time to discuss any concerns, we would appreciate it if you could book an appointment time so that we are able to give you an interruption free period.

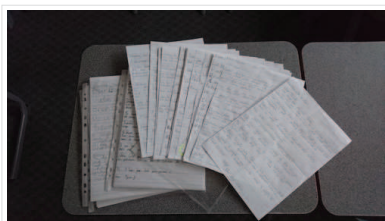
Yours in learning,

**Rebecca Coplick, Grayham Tyler, Nikki Swain, Peter Wright**

## GERMAN NEWS

Endlich!! Our package of work is finally underway to the Ludwig Leichhardt Primary School in Tauche in Berlin and should arrive at the end of this week. We have sent our crafty Australian animals for the celebratory art display with descriptions in German and English ... we sent them some books for their library ... and Ms Andrew, some Yr 6 students and I and the Honorary Consul for Germany sent them greeting messages.

We also had a letter writing day and have included 160 penal letters from Year 6 and 5M.



We are watching for the postman ourselves as we await the delivery from Berlin!! There will be a display in the library of our combined Ormeau and Berlin work from May 2 – May 13.

We will be preparing for the International Online Language Perfect World Championships in class, as the competition kicks off on May 16. Ormeau has a great tradition of achievements.

Rehearsals will also start soon for the upcoming Culture Day at the end of term. We have a few surprises in store.

The Year 6s have the opportunity to participate in an excursion to the Lone Pine Sanctuary at Jindalee on Tuesday June 14. Joining with a number of other schools which also teach German, the Goethe Institut organise a German experience of visiting the Tierpark, with maps provided in German, treasure hunts and quizzes which require reading German and animal presentations ... in German. There will also be free time to feed the kangaroos and emus and visit some of the shows.

Parent letters and permission forms will be sent out shortly.

In June we will be joined on staff by a Praktikantin from Cologne, Germany, Frau Christine Blech. She will be assisting with the classes while completing her degree.

As always ... never a dull moment in the German classes!!

## HEAD OF CURRICULUM NEWS

### HELPING YOUR CHILD WITH READING

Literacy expert, Angela Ehmer will be again visiting our school next week.

As part of her visit, Angela will be running a parent session on "Helping Your Child With Reading". This is a perfect opportunity to build a range of strategies, which you can use at home with your child. Angela's friendly disposition makes for an enjoyable session. Everyone is welcome to attend.

This will take place on Tuesday 26 April from 9:30 am in the school hall. This follows Junior School Parade.

Please refer to the flyer in this newsletter for full details.

### UNIVERSITY OF NSW ASSESSMENT - SCIENCE

A note was sent home this week with all students in Years 3 – 6, with information about the University of NSW Science Assessment.

Students with a keen interest in all Science areas AND who are good readers, are encouraged to participate.

Cost is \$8:00 and must be paid to the school office by Friday 2 May.

The test will be administered to students AFTER school on Tuesday 31 May starting at 3:15 pm. This will be in the iCentre and lasts about 1 hour.

Information about upcoming the Term 2 Spelling assessment will be sent home in the next couple of weeks. Mathematics will take place in Term 3.

If you have any queries, please contact me at [jmcco40@eq.edu.au](mailto:jmcco40@eq.edu.au).

Kind regards

**Julie McCombe**

## Reading Information Session for Parents

Presented by Angela Ehmer

*Angela Ehmer is a highly-respected literacy consultant, who has been working in our school over the last 3 years.*

*This session will be valuable to both parents/caregivers of children of ALL ages, as well as classroom helpers.*

*Angela will present information on the importance of*

- oral language
- reading aloud
- vocabulary and
- home reading tips.

**PLEASE JOIN US FOR THIS IMPORTANT EVENT.**

**When:** Tuesday 26 April  
(following our Junior School Parade)

**Time:** 9:45 am—10:45 am

**Venue:** Hall

Supervision of pre-schoolers provided.



## ADMINISTRATION NEWS

### Payment Information

**New Payment Window days:** Tuesday and Thursday 8am - 9:30am

**Paying in Person:** Payment by Credit Card, Debit Card, Cash or Cheque can be made at the school Payment Window **Tuesday and Thursday** 8am – 9:30am

**Paying via Internet Banking:** Direct Payment into School Bank Account

- School's Bank Account Name: Ormeau State School General A/C
- BSB Number: 064-401 (CBA Branch Beenleigh)
- Account Number: 00090359
- Reference/Details: Please record the student's I.D. number in the reference/details section so that your payment can be recorded correctly.

**Paying by BPoint online payment service:** Invoiced payments **Only** can be made by Visa or MasterCard by logging onto the website below.

<http://www.bpoint.com.au/payments/dete>

**Paying by phone:** Payment by Credit Card ONLY

Call the school on **55 466 500** Monday to Friday between 8am - 4.00pm. VISA or Mastercard accepted.

Kind regards

**The Administration Team**

## P AND C NEWS

The Ormeau P&C is looking forward to a great 2016. The P&C is your forum to raise ideas and ask questions, help with events and plan for the future. You have taken your first step in getting involved with your school community by following the P&C on Facebook. We hope to see you at our meetings or during our events throughout the year. Meetings are held on the second Monday of each month at 7pm.

### Our School P&C 2016 Executive Committee

President – Tom Koskela  
Vice President – Gina Osborne  
Secretary – Nicole Sycz  
Treasurer – Yvette Lesina  
Events Coordinator - Erica Koskela

### Tuckshop News

Tuckshop has just released their Term 2 menu with yummy daily specials. Flexischools.com.au is the convenient way to order for your child/ren.

If you have the chance pop up and see where you can lend a hand. Even just doing a simple task, i.e. dropping off uniforms to a classroom, running the rubbish to the bin, making cupcakes, or even serving the kids.

### Uniform Shop News

School Sports Days are Friday, don't forget to order your child/ren sports shirt.

Cooler days will be approaching soon, Jumpers are available to purchase.

Uniform Shop current hours are:

**Monday 8am – 10am**

**Wednesday 2pm – 3pm**

During Uniform Shop hours you can collect Flexischool orders, try on uniforms.

Ordering through [www.flexischools.com.au](http://www.flexischools.com.au) is a convenient way to order uniforms. They will also be delivered to your child's class or collect from Tuckshop.

<http://www.flexischools.com.au/>

### Fundraising

Entertainment Books are available to order through the Tuckshop, please email or call [ormeautuckerbox@gmail.com](mailto:ormeautuckerbox@gmail.com)

07 5540 7935

### Upcoming Events

Mother's Day Stalls will be held:  
Junior School - Wednesday 4th May  
Senior School - Friday 6th May

If anyone can help out if even for a short time, your help is much appreciated. Please contact [pandc@ormeauss.eq.edu.au](mailto:pandc@ormeauss.eq.edu.au) if you can help.

The Stalls are run by the P&C and all profits go back to the school.

'Like' us on Facebook

**Ormeau State School P&C**

## COMMUNITY NEWS

### SIBA SOCCER

is returning to Ormeau State School for another after School Soccer Program in Term 2

Following the success of our after school program at the school in 2015, again, in partnership with **Ormeau State School** we will be running the following After School Soccer Program for both boys and girls:

Starts: - Tuesday 19th April 2016

Duration: - 8 Week program (Every Tuesday)

Time: - 3.15pm – 4.15pm

Ages: - 5 – 12 years old

Cost: - \$99.00

Venue: - Main School Field, Ormeau State School

This program is a fun, safe and structured one hour after school program held at various schools and Colleges designed for school students to learn the fundamental skills of football in the comfort of their own school. It consists of fun warm up games, ball skills, passing/shoot on goal activities 1v1 & 2v2 games as well as other small sided team games

You can simply register and pay online for this program on our website (click on Calendar, then click on 19/4/16 (start date) & then click Ormeau State School term 2 and then please fill in the relevant booking form on that page)

<http://www.sibasoccer.com.au>

*\*If paying online, can you please remember to enter your child's name as a reference\**

For more information please email [simon@sibasoccer.com.au](mailto:simon@sibasoccer.com.au)  
OR call Simon on 0434 897664

## Zumba



**ZUMBA<sup>®</sup> with Jo Mellare**  
0407 295 595    [jomellare.zumba.com](http://jomellare.zumba.com)  
[www.facebook.com/zumbawithjomellare](http://www.facebook.com/zumbawithjomellare)

**GROOV'N CLASSES for ALL Ages & Abilities**

**MONDAYS 9:30am & WEDNESDAYS 7:30pm**  
Upper Coomera Community Centre, 90 Reserve Rd

**TUESDAYS 7pm & THURSDAYS 6pm**  
Ormeau State School Hall, 29 Mirambeena Dr

**WEDNESDAYS 9:30am**  
Coomera Community Space, 133-138 Finnegan Way

**FRIDAYS 9:30am**  
Fighter's Fitness 24/7, 11/29 Peachy Rd

**Kids ZUMBA**  
DURING School Terms for Ages 5-12yrs  
**MONDAYS 4pm**  
Fighter's Fitness 24/7, 11/29 Peachy Rd

**TUESDAYS 6pm & THURSDAYS 7pm**  
Ormeau State School Hall, 29 Mirambeena Dr

**ZUMBA toning**

Please Click "LIKE" & "SHARE" our Business Page you can keep up to date with up-coming events, news, specials and class timetables.

<http://www.facebook.com/zumbawithjomellare>

Thank you for your time

**Jo Mellare**  
**Zumba® Instructor Ph: 0407 295 595**

## Guitar Lessons



**Taso's  
music  
SCHOOL**

**GUITAR LESSONS**

- School group lessons
- 2-4 students for 30 min. lessons
- After school programs
- Book your lessons now and receive your first one free!
- Call Taso on mobile: **0408 770 760** or email: **tasoacousticguitar@gmail.com**

## ORMEAU PIMPAMA ANZAC DAY SERVICE

An invitation is extended to be part of the special celebrations for the Centenary of the Battles of the Western Front at the 2016 Ormeau Pimpama ANZAC Day Celebrations on April 25, commencing at 8.30am in the grounds of the Pimpama Living Rivers Uniting Church, Creek Street, Pimpama (The Old Pacific Highway).

The day will commence at 8.30am at the Memorial Statue with the ANZAC service, and following it you can view the memorabilia display including photos and history of the seven soldiers whose names are dedicated on the Memorial Statue.

Morning tea will be provided and a sausage sizzle will operate until 1pm. ANZAC badges will be available to purchase.

***Ormeau Pimpama War Memorial Committee***